



JACKSON COUNTY PARKS + REC

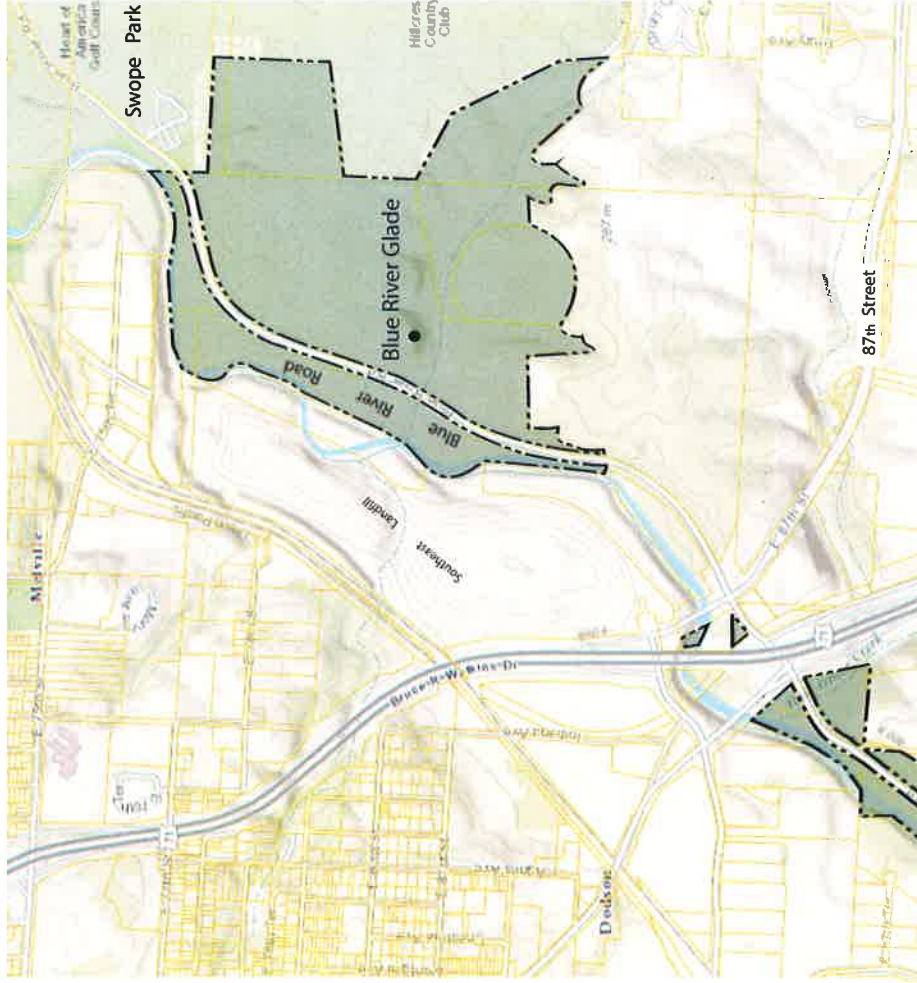
22807 Woods Chapel Road
Blue Springs, Mo. 64015
816-503-4800

www.makeyourdayhere.com

Blue River Parkway

(North Portion)

Swope Park
to
Red Bridge Road

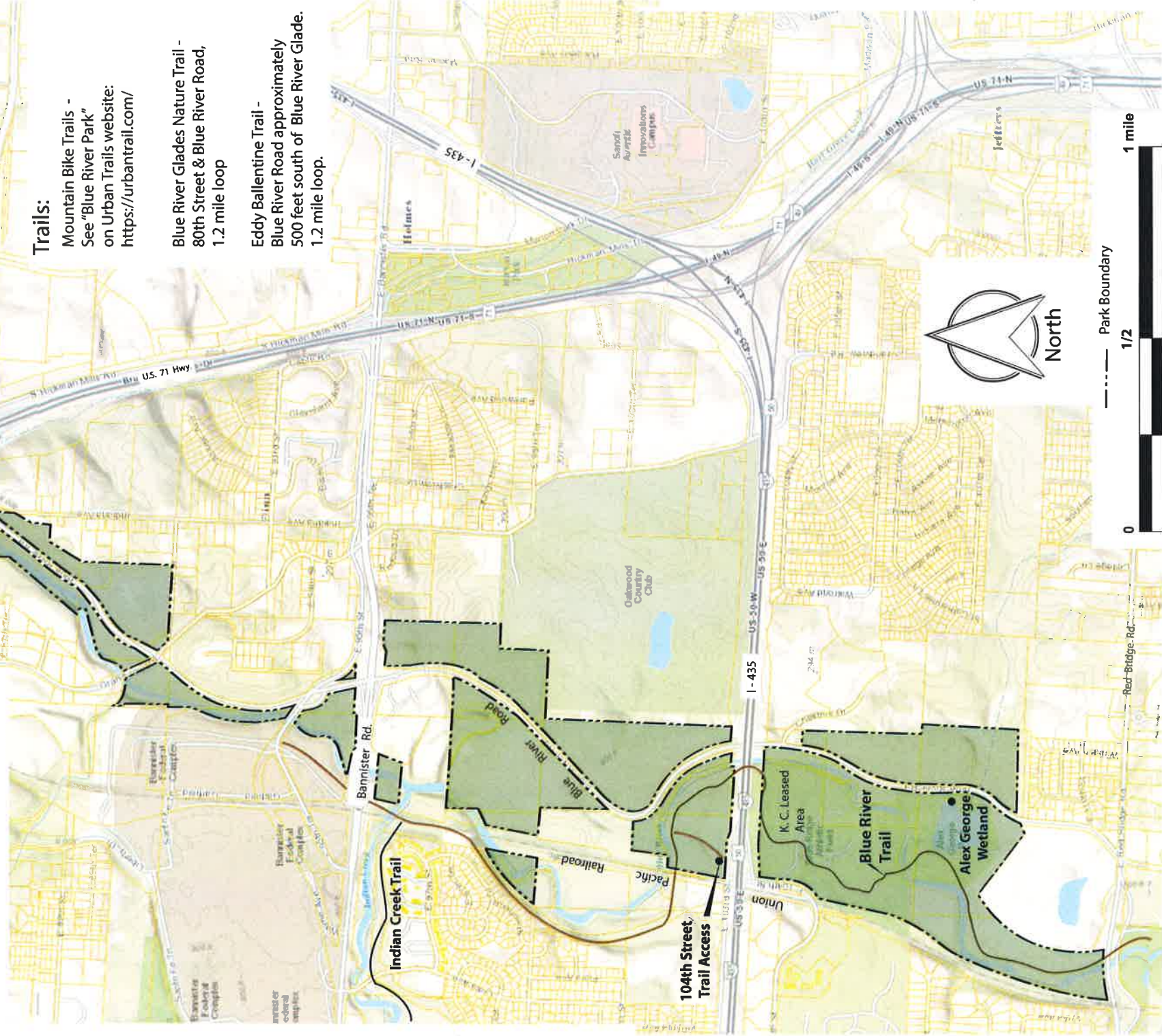


Trails:

Mountain Bike Trails -
See "Blue River Park"
on Urban Trails website:
<https://urbantrail.com/>

Blue River Glades Nature Trail -
80th Street & Blue River Road,
1.2 mile loop

Eddy Ballentine Trail -
Blue River Road approximately
500 feet south of Blue River Glade.
1.2 mile loop.



----- Park Boundary

1/2

0

1 mile